

# Machine Learning for Plant Leaf Disease Detection and Classification

Swati Late, Mayuri Kolge, Lisha Hingane, Nikita Yadav



swatilate9@gmail.com  
mayurikolge5@gmail.com  
lishahingane4040@gmail.com  
ynikita888@gmail.com

DEPARTMENT OF COMPUTER ENGINEERING

JSPM'S IMPERIAL COLLEGE OF ENGINEERING AND RESEARCH  
WAGHOLI, PUNE 412207 SAVITRIBAI PHULE PUNE UNIVERSITY

## ABSTRACT

It is not always possible for the farmers to predict the situation that can arise and their prediction can fail. The main reason is the plant disease. So to assist the farmers in safeguarding the plants from diseases becomes the motivation. The majority of the researchers have identified that leaf images play a crucial role in the automatic detection of plant diseases. Currently, various advancement techniques are used in automatic disease detection of plants such as Machine Learning, Deep Learning, Computer Vision, Internet of Things (IoT), Expert Systems. The purpose of this system is to detection leaf disease using the machine learning technique based on Healthy and Unhealthy Image Dataset for processing the plant leaf image to detect diseases.

**Keywords:** Machine Learning, Leaf Dieses Detection, Languages and compilers, Optimization, Image Processing

## ARTICLE INFO

### Article History

Received: 2<sup>nd</sup> May 2021

Received in revised form :  
2<sup>nd</sup> May 2021

Accepted: 5<sup>th</sup> May 2021

**Published online :**

5<sup>th</sup> May 2021

## I. INTRODUCTION

The plant diseases mean the studies of visually observable patterns seen on the plant. Health monitoring and disease detection on plant is very critical for sustainable agriculture. It is very difficult to monitor the plant diseases manually. One major effect on low crop yield is disease caused by bacteria, virus and fungus. It can be prevented by using plant diseases detection techniques. It requires tremendous amount of work, expertize in the plant diseases, and also require the excessive processing time. Hence, image processing is used for the detection of plant diseases. Disease detection involves the steps like image acquisition, image pre-processing, image segmentation, feature extraction and classification. So to detect the plant diseases in advance and to detect the diseases with the help of modern computer technology, proposed a model for the efficient distinguishing plant diseases.



Fig 1. Simple Leaf Dieses

### Problem Statement:

To The global economy mainly depends on the agricultural sector. Rising incidents of diseases that are discovered recently or did not exist before is an increasing concern in the Agriculture sector. The environment is changing continuously which is harmful to the crops and leading farmers towards debt and suicides. The majority of the researchers have identified that leaf images play a crucial role in the automatic detection of plant diseases.

## II. LITERATURE SURVEY

[1] Plant Disease Classification Using SOFT COMPUTING Supervised Machine Learning, Aman Sehgal, Sandeep Mathur, these project undertaking would help in improving the Plants growth. The plant is always concerned about the diseases introduced by pathogens for example infections, microorganisms and parasites in the plant bodies. It is globally recognized that, pathogens tends to cause huge yield misfortunes. Various researchers have explored how to diminish the harmfulness of pathogens in plants. A few analysts have explored some opposition qualities in plants and attempts to improve the obstruction of plants to pathogens. Meanwhile, different analysts have created ID and s coring framework for monitoring and examining the

advancement or quality and also by anticipating the infection bolstered leaves. The reason for this Review work is to display the use of AI in the revelation of plant opposition.

[2] Plant disease identification and classification using Back-Propagation Neural Network, Moumita Chanda, Mantosh Biswas, It Agriculture is the culture of land and rearing of plants to supply food to nourish and enhance life. Different types of plants are farmed every year based on environmental conditions and it is one of the main economic sources in India. These plants are prone to many diseases which hinders normal growth of the plants; these diseases are caused by seasonal changes, environmental variations, and cultivation procedures. To protect the plants from such damages, diseases need to be identified and properly diagnosed on time. Hence, innovation of feasible and powerful methods for identification and classification of plant diseases is an urgent need. So to remove this constraint, in this paper author given an image processing solution to distinguish and classify plant diseases efficiently and accurately. In this proposed method, for classification first, author use back-propagation algorithm to get the weights of neural network (NN) connections and then optimize these weights using Particle Swarm Optimization (PSO) to come out of the problems like local optima and overfitting which are very common in conventional NN training methods.

[3] Disease Manifestation Prediction from Weather Data Using Extreme Learning Machine, B.K.Singh. Shweta Kharayat, in these based on Potato Late Blight is caused by Oomycete pathogen *Phytophthora infestans*, considered to be a community disease due to rapidity of spread. It causes huge economic losses estimated at US dollars 898 billion Worldwide. The motivation behind this the work is to reduce the economic loss caused due to late blight in potato. So far statistical approaches have been used for predicting the disease outbreak. It predicts late blight disease in potatoes with the help of weather parameters with a new approach. Extreme Learning Machine is used as an intelligent learning agent for generating the prediction model. Experiments are conducted on AICR potato database. Proposed approach was tested for several variations and could achieve accuracy of 91.5%.

### III. PROPOSED SYSTEM

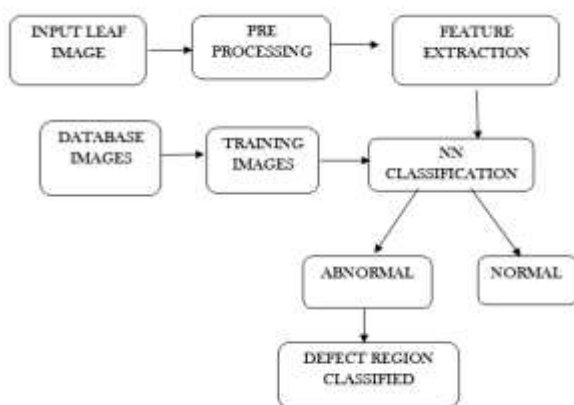


Fig 2. System Architecture

#### A. Description:

It focuses on the finding prominent accuracy of the leaf image diseases using deep learning approach. Acquiring the better performance in disease identification.

Proposed model provides an improved solution in disease control for leaf diseases with high accuracy.

#### B. Mathematical Model

The mathematical model for Leaf Disease system is as

$S = \{I, F, O, Si, Fi\}$

Where,

I = Set of image leaf dataset

F = Set of functions

O=leaf disease prediction

$F = \{F1, F2, F3\}$

F1=Data Collection,

F2=Data Preprocessing,

F3=Feature Selection,

F4=Classification

F5=Leaf disease detection.

Si: Success Condition

When the leaf disease identified from proposed algorithm.

Fi: Failure Condition

When Leaf disease not identified.

#### C. Flow Diagram

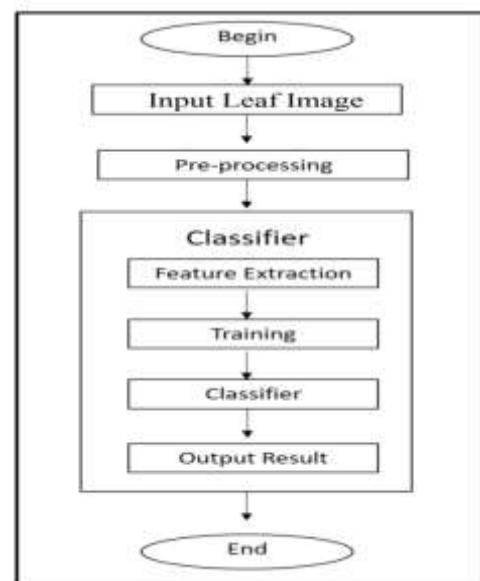


Fig 3. Flow Diagram

### IV. ACKNOWLEDGEMENT

I wish to express my profound thanks to all who helped us directly or indirectly in making this paper. Finally, I wish to thank to all our friends and well- wishers who supported us in completing this paper successfully I am heartily thankful to my project guide for his valuable guidance and inspiration. In spite of their busy schedules they devoted their self and took keen and personal interest in giving us constant encouragement and timely suggestion. Without the

full support and cheerful encouragement of my guide, the paper would not have been completed on time.

## V. CONCLUSION

The model not only adapts to complex environments, but also increases the accuracy of identification. Compared with the traditional model, the plant disease identification model based on deep learning proposed in this module can overcome the complexity of the environment and improve the accuracy of identification. When scaled, this approach can help in digitally monitoring crop health and could lead to significant improvement in the agriculture productivity and yield.

## REFERENCES

- [1] Ana errero, Aoife owen, Nathalie Gorretta, Jean-Michel Roger: "Early detection of the fungal disease "apple scab" using SWIR hyperspectral imaging", pp – 2019.
- [2] Md.Sazzadur Ahamed; Aniruddha Rakshit; K. M. Zubair Hasan : "Recognition of Jute Diseases by Leaf Image Classification using Convolutional Neural Network", pp. – 2019.
- [3] Md. Al-Amin; Tasfia Anika Bushra;: "Prediction of Potato Disease from Leaves using Deep Convolution Neural Network towards a Digital Agricultural System", pp – 2019.
- [4] Ira Prasetyaningrum; Tessy Badriyah : " Corn Pests and Diseases Prediction Using Linear Regression and Natural Spline Methods", pp. 2018.
- [5] B. K. Singh ; R. P. Singh ; Tejasvee Bisen : "Disease Manifestation Prediction from Weather Data Using Extreme Learning Machine ", pp. 2018.
- [6] Komal Raikar Sushopti Gawade: "Usability improvement with crop disease management as a service", pp. 2017
- [7] Thomas Truong, Anh Dinh: An IoT environmental data collection system for fungal detection in crop fields. Pp - 2017